

Available in all European
countries (except CH, UK, ES)

Food Allergy – a new approach

Determine the best commercial diets/treats for allergic dogs and cats by using our new tests

Cani-DIAL • Feli-DIAL

- Allergy is a chronic, complex and multifactorial disease
- One of the first diagnostic steps is to exclude/confirm food allergy
- To choose the appropriate diet is a challenge for both the vet and owner

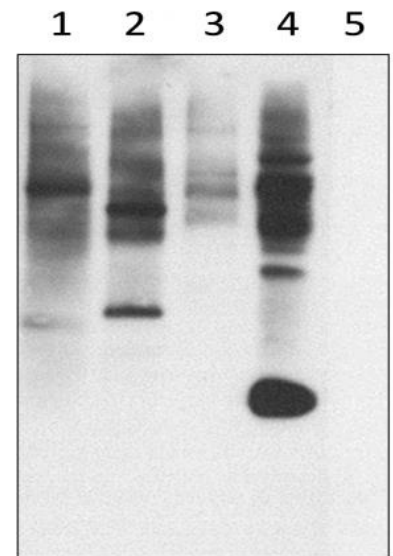


**If you suspect food allergy,
Cani-DIAL / Feli-DIAL
can help you determine:**

- If the animal is sensitized against the current used diet
- Which 5 or 10 commercial diets are most likely to be tolerated

Cani-DIAL / Feli-DIAL are highly specific immunoblot tests:

1. Detects specific immunoglobulins E (IgE) produced by a dog or cat against allergenic proteins contained in a range of commercial diets from a simple **serum sample**.
2. Uses a **western blot technique**, which has been proven to be highly reliable and specific.
3. Sample proteins of each diet are extracted, separated on a gel according to their molecular weight and then transferred to a membrane (blot). This is incubated in the presence of serum and when raised levels of antibodies are present against these proteins, they bind to the corresponding protein and a specific black band appears on the membrane, showing the sensibility of that particular diet or treat.



#1 shows sensitization to its regular diet
#2-5 are alternative diets tested
#5 shows no reaction = suitable diet

How to order our new diet sensibility test?

1
Sample 1 ml serum
(No corticoid withdrawal needed)

2
Find the list of available
diets/treats on [www.
laboklin.com](http://www.laboklin.com)

3
Fill out the form and write
the 5 or 10 diets/treats
to be tested (the current
diet + 4 or 9 additional)

4
Send the serum sample
together with the Cani-/
Feli-DIAL submission
form to LABOKLIN

References:

Favrot C. et al., 2016, Food processing is associated with changes in the IgE sensitization profile in dogs. Proceedings of the 8th WCVD.

Favrot C. et al., 2016, Western blot analysis of sera of dogs with suspected IgE-mediated food allergy. Proceedings of the 8th WCVD.

Favrot C. et al., 2016, Improved clinical approach for canine patients with suspected food allergy through Western blot-based analysis of dog sera, BMC Vet. Record